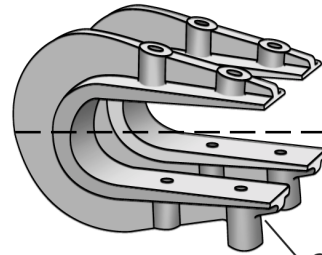
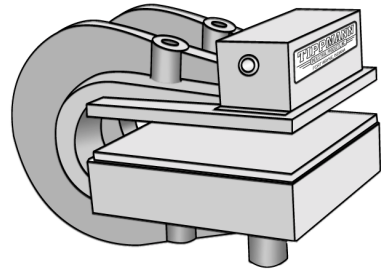


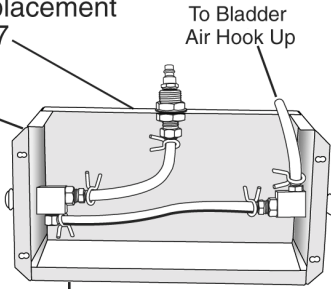
# TIPPMANN CLICKER MODEL 700

SCHEMATIC 05/09/2007



Control Box sold complete as one replacement part - CB-7

CL7-3 Control Box (Housing Only)



CB-07 8-32 x 3/16" Set screw

CL7-54 Button

CB-01 Valve

CB-04 1/8 NPT x 1/4" Barb Elbow

Control Box Insides

CB-06 Hose Clamps (5)

CL-60 1/4" I.D. Tubing (2)

CB-02 1/8 NPT x 1/4" Barb (3)

RG-16 Quick Connect

CB-03 1/4 NPT x 1/4" Barb

CB-05 Bulkhead

To Bladder Air Hook Up

To Bladder Air Hook Up

CB-07 8-32 x 3/16" Set screw

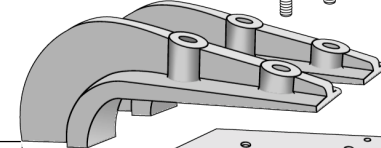
CL-1 C-Castings (2)

SM-100-19 10-32 x 1/4" Button Head Cap Screw (4)

SM 101-15 1/4" Flat Washer (4)

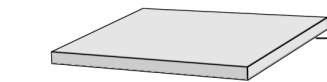
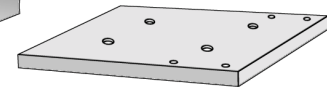
CL7-3 Control Box

CL100-9 1/2-13 x 1 SHCS (4)

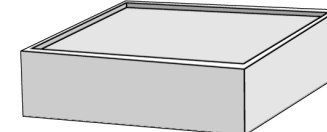


CL7-2TM Top Plate

CL7-15 Cutting Board



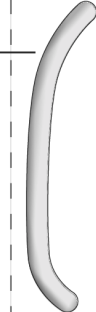
CL7-5MM Middle Plate



CL7-4 Bladder

CLK-33-1 Bladder Tape

CL-60 1/4 I.D. Tubing



CL7-2BM Bottom Plate

CL-100-7 1/2-13 x 2 1/2" SHCS (4)

CB-06 Hose Clamp

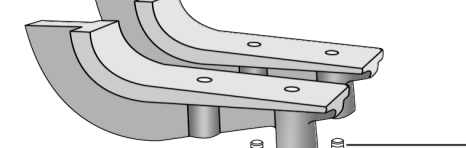
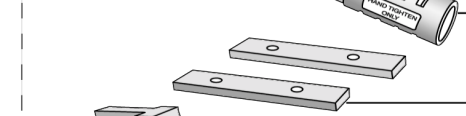
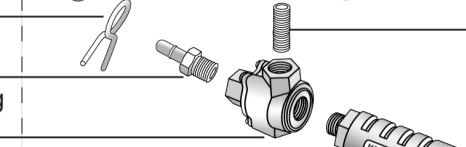
CL-62 1/4" x 1/4" Barb Fitting

CL-21 Quick Exhaust 1/4"

CL-16 1/4" Close Nipple

CL-12 Exhaust Muffler

CL-68 Spacer (2)



CL-100-2 1/2-13 x 1 1/2" SHCS (4)